



**Date: March, 2021**

**Due to COVID-19, Tower Arctic cannot hold public meetings. Please see this document, our Facebook and website for information on the 2021 construction season.**

### **START OF THE PROJECT AND HIRING**

The construction of the Small Craft Harbour will go ahead this summer. This has been approved by the GN and by the Hamlet. The Tower Arctic team will follow the recommendations of the Chief Medical Officer of Nunavut. Everyone has been in quarantine at a designated hotel for 14 days before flying to Pond Inlet. In addition, the TA team has the following COVID-19 precautions in place:

- Social distancing of 2 meters or wearing a mask when this is not possible;
- Increased hygiene standards in workplaces and camps;
- Worker health monitoring

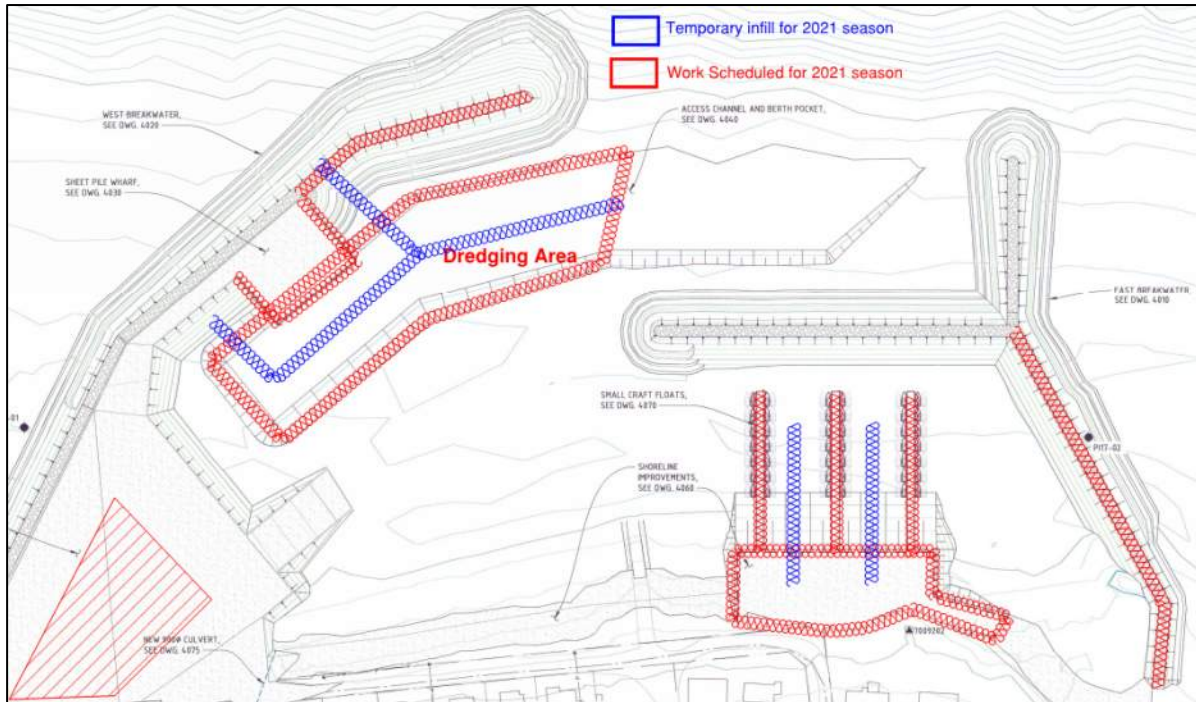
The team should arrive in Pond Inlet the week of April 5th. The team will prepare the camp, the site and the equipment and the **construction work will start probably the week of April 29th.**

**Hiring for the project will start the week of April 19th** and people interested in working with TA this summer can apply through the **Tower Pond Inlet Facebook** page and **info@towerarctic.net**. The following jobs are available are **truck drivers, housekeepers, welder, laborer, nautical assistant.**

### **CONSTRUCTION PLAN FOR 2021**

- April: Project start up, hiring and training of new employees
- May : blasting, crushing and rock transport
- June : Sheet pile wharf construction, blasting and rock transport
- July: Sheet pile wharf construction, Rock transport (East & West breakwater), Dredging, Shoreline Improvement and float pad, laydown area
- August: Dredging, Rock transport (West breakwater), Demobilization
- September: End of the season





The sealift and fuel delivery will take place as usual and will not be affected by construction.

This year again, there **will be pile driving at the wharf**. This involves using heavy equipment to push and punch anchoring posts in the rock so that the wharf is stable and solid. **It will be noisy**, and you will all hear the loud banging when it happens. Many will find this annoying. It is necessary and will likely few weeks. During that time, Marine Mammal Monitors will watch for animals in the water and let the crew know if animals are too close.

**SAFETY AND BEACH ACCESS FOR BOATS AND VEHICLES:**

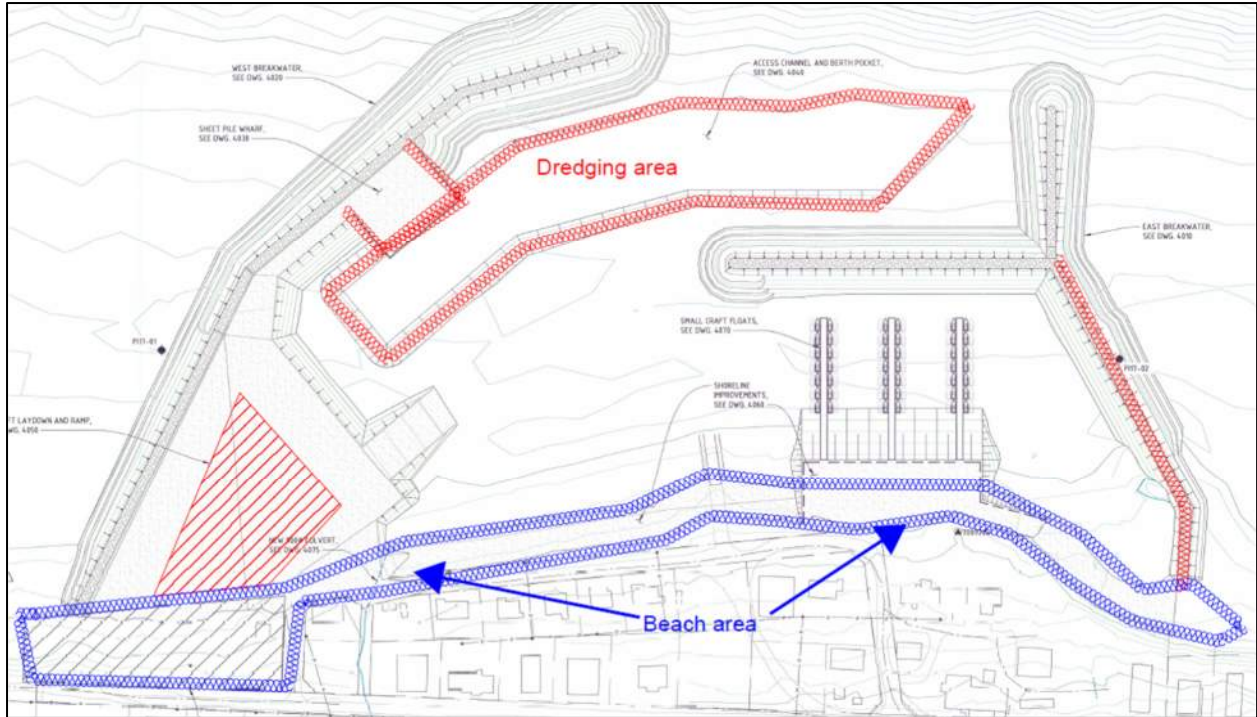
The shoreline will be accessible to boaters. Signs will be posted to let you know where and when access will be restricted. Just like last year, there will be a lot of traffic this year.

- Keep this area clean and make additional precautions when you are within this area.
- Keep the beach clear of gear and equipment according to dates and locations on posted notices.
- Pay attention to new traffic and access pattern both on water and on land.

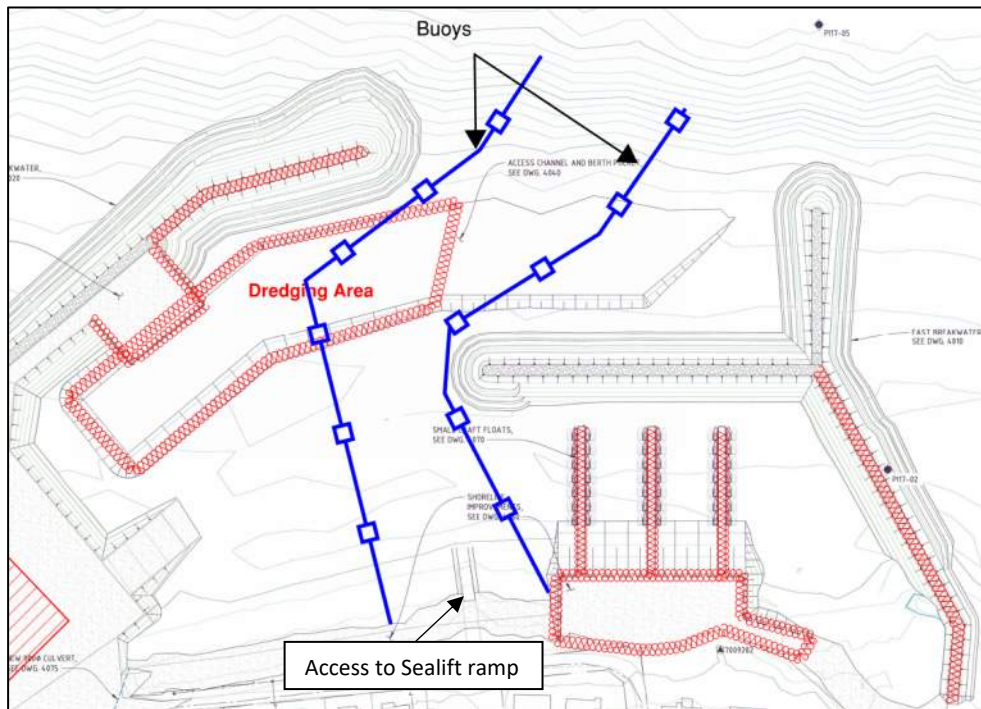
**SAFETY FOR TEMPORARY INFILLS:**

For 2021 season, temporary infills shall be in place and may not be visible during high tides. However, markings (ball buoys and/or orange posts) will be placed to indicate the location of those submerged accesses. Those temporary infills shall be in place during July and August.





**SAFETY AND ACCESS DURING DREDGING:** During the construction, Tower will phase the construction activities in order to let a fully access to the sealift ramp. **Two lines of buoys will show the path for boats to follow.** A SIGN WILL BE POSTED at the beach for information.





## **SAFETY AND BLASTING**

Blasting will start the week of May 1st and continue until the end of June 2021. As in last years, a safety area for blasting will be set up. It is important to respect this safety zone at all times. If you are not sure that there is a blast do not hesitate to ask Tower Arctic workers on site.

- The same safety measures will take place as last year, with access to the QUARRY AND SAFE ZONE LIMITED.
- The blasting is scheduling once a day and will be announced at the radio, posted at the Hamlet, Pond Inlet News Facebook group, Tower Arctic website and a sign will be posted at the dump area.

The HAUL ROAD will be busy again this summer.

- Please stay off the road and talk to youths and children about safety measures.
- Be careful when crossing the haul road between the Quarry and Stockpile sites.
- Always have a visual contact with the truck drivers when crossing the road.

## **KEEPING YOU INFORMED**

**For Tower Arctic Ltd., cooperation with the community is a priority.**

**Project Website: [www.towerarctic.net](http://www.towerarctic.net)**

**Updates and notices will be posted on Facebook:**

- **Tower Pond Inlet page**
- **Pond Inlet News group**

**Posters will be placed at the Hamlet office, the library, Coop and Northern Store poster boards.**

## **Tower Arctic Ltd – Contact on site**

Simon Brochu

Project Manager

1-867-979-6465

Alexandre Beaumont

Assistant Project Manager

1-581-397-6437

[Info@towerarctic.net](mailto:Info@towerarctic.net)



